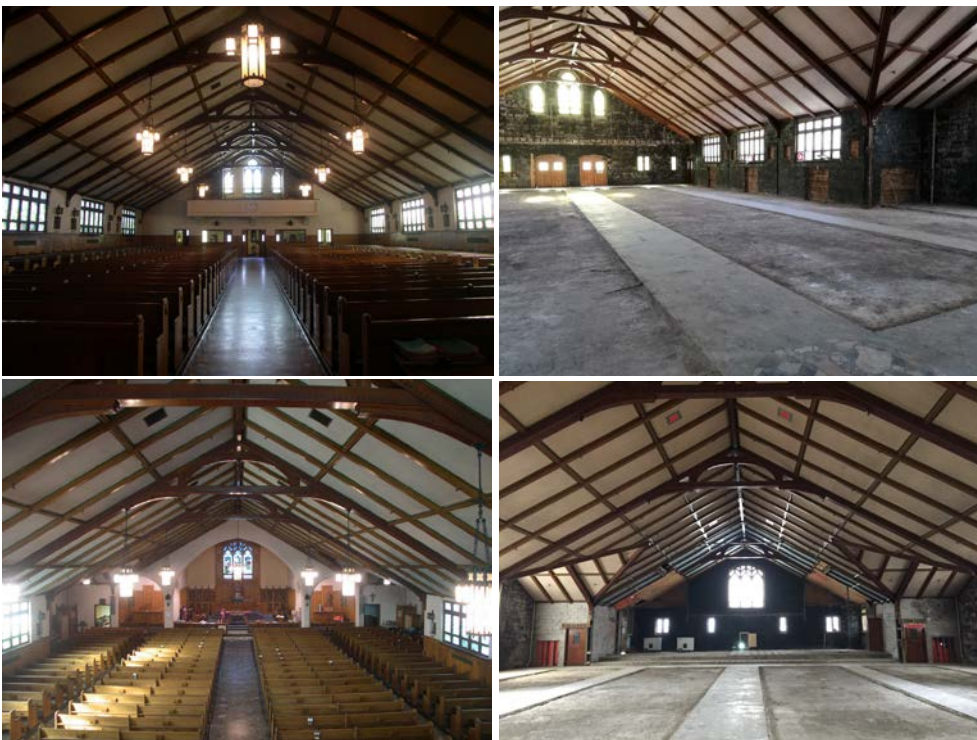


Construction has begun..... with some demolition



Views of the back of the church (top) and the altar (bottom) before and after demolition (May 2018)

AFTER PREPARATION OF THE SITE LAST DECEMBER, CONSTRUCTION STARTED IN THE NEW YEAR.

EBC Inc., the general contractor for the project, recently finished all external demolition and most of the interior demolition. Removal of the concrete floor slabs on both floors is set to be done in the coming days.

Construction of the palliative care home and day centre is expected to be completed by late 2018 - early 2019.

Thank you to our donors*!

- Archdiocese of Montreal
- Desjardins
- EBC
- Estate of Father Gerald A. Snel
- Family of Romaine Ardizzone
- Fondation Luc Maurice
- France and André Desmarais
- Future Electronics
- Groupe Marchand Architecture and Design
- Harden Management
- Marco and Cynthia Ottoni
- Mirella & Lino Saputo Foundation **NEW!**
- Molson Foundation
- Montreal St. Patrick's Foundation
- Paula Pedicelli **NEW!**
- Power Corporation
- Quebecor Media
- RBC Foundation
- Roasters Foundation
- Rossy Family Foundation
- Vidéotron

** List of donors of \$100,000 or more, in alphabetical order.*

We need your help.

OBJECTIVE:
\$10 M

maison
straphael
.org

For a complete list of donors, visit our website at maisonstraphael.org

The rectory is gone!



BEFORE



AFTER



SOON

After substantial asbestos decontamination work was completed, the rectory was demolished safely this past May. In its place there will be a large atrium forming the main entrance to the home and day centre, a visitors' reception area and a more spacious garden.

Soon you'll be able to follow the progress of construction in the News section of our website

What's New?

LATEST NEWS FROM THE MAJOR FUNDRAISING CAMPAIGN THAT'S IN FULL SWING.

WHERE WE'RE AT



We've reached 70%, let's stay the course!

With over \$7 million raised, we're approaching our objective.

We continue to meet with potential donors and would welcome the opportunity to discuss ways in which you could help.

WHO'S "WE"?



Do you want to know more?

To find out how the project is progressing, follow the **Maison St-Raphaël** page on Facebook and LinkedIn!

WE'RE HIRING



We also need to build our team!

We have begun the recruitment process for an executive director, a director of nursing, and a volunteer coordinator.

Increase in the subsidy for beds

THE QUEBEC HEALTH MINISTRY RECENTLY INCREASED THE ANNUAL SUBSIDY FOR EACH PALLIATIVE CARE BED IN THE PROVINCE

The subsidy will increase to \$75,000 per bed (we had budgeted \$68,000) starting this year, and will also be indexed annually. This subsidy covers approximately 40% of annual patient care expenses.

St. Raphael's will also benefit from this subsidy, which will help to fund a portion of our operating expenses.

We are still waiting for confirmation from the Ministry about a subsidy for our day centre.